

# LIBRA H1

LIBRA is the innovative family of CABINET HANGERS and WALL PLATES especially conceived to satisfy all the customer's needs. The LIBRA hangers are to be installed behind the rear panel with the only small cover caps left visible inside the cabinet.

LIBRA is a very resistant and reliable solution as the zinc-coated steel body is sensibly thicker, and therefore stronger.

All the models within the LIBRA family feature an innovative ANTI-TURNOVER device which is covered by patent.

LIBRA H1 is the universal screw fixing cabinet hanger.

Also featured in the LIBRA family are 5 types of wall plates and 1 types of wall bars made of very thick zinc-coated steel and hardened by punched impressions.

Wall bars and wall plates feature oval holes which facilitate the correct positioning and give the possibility to carry out the horizontal adjustment.

Placement of the holes for wall-fixation has been optimised to reduce the stress on the plates and on the plugs.

LIBRA cabinet hangers allow to adjust the cabinet vertically and horizontally. The 2 movements are 100% INDEPENDENT of each other and therefore make the adjustments much easier and more efficient.

The adjustment and the locking of the ANTI-TURNOVER bolt can be carried out from the inside of the cabinet by using a standard PZ2 screwdriver.

Capacity Loading 75 Kilos per piece in accordance with the regulation DIN 68840

Steel, Zinc alloy and Engineering plastic according to related version.

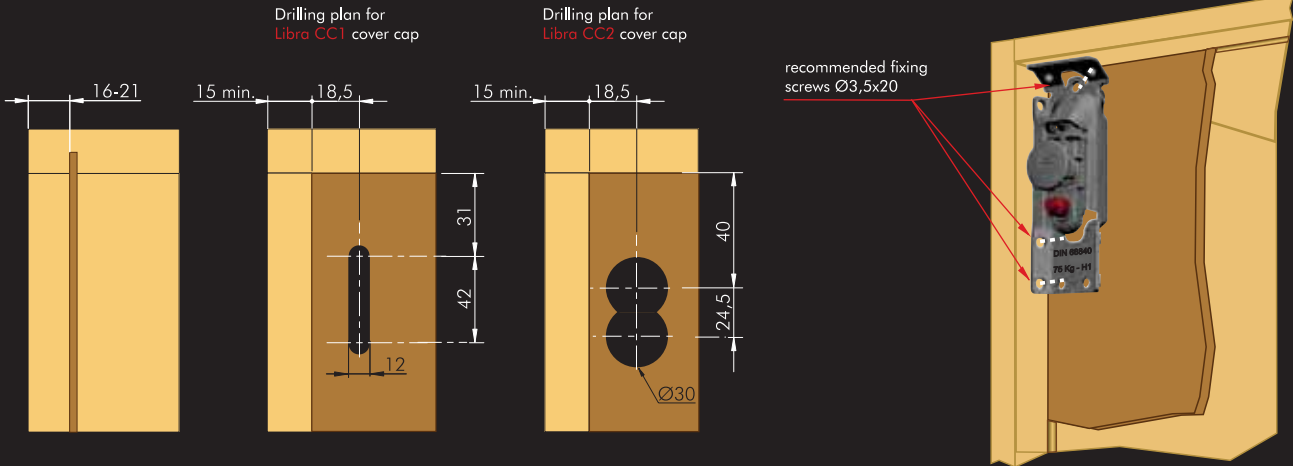


Part. no	Description
63420010ZN	Cabinet hanger <b>Libra H1</b>

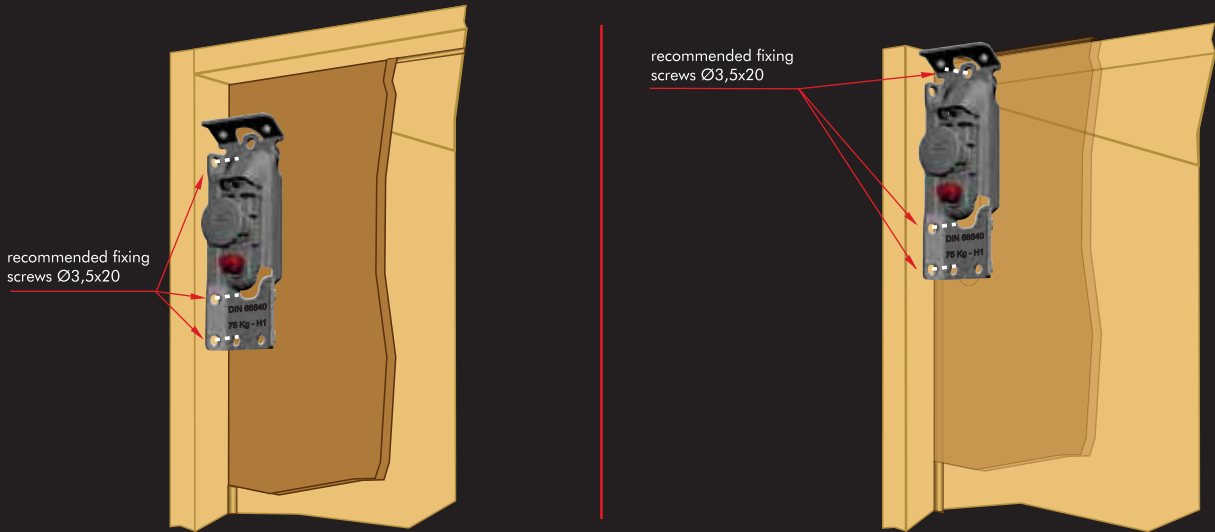
For wall plates and cover caps see the related pages.

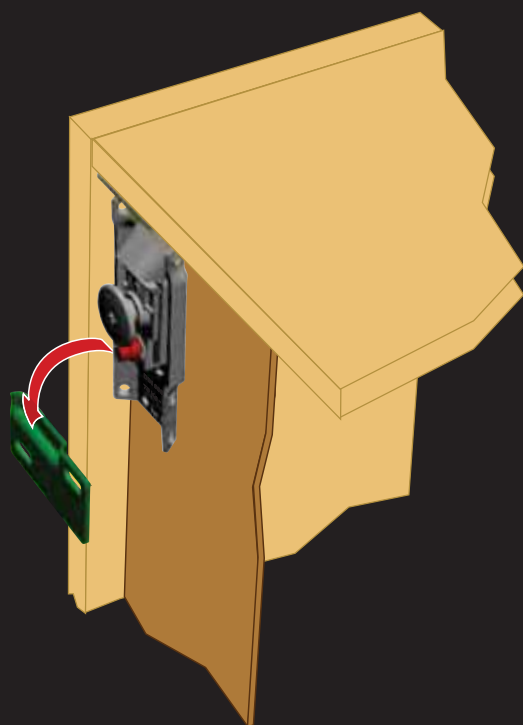
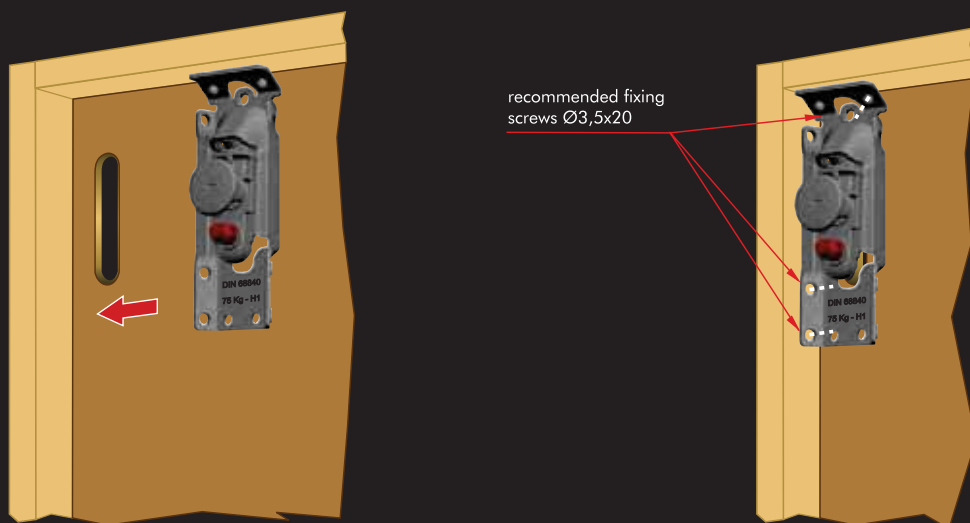
PAT. PENDING

## DRILLING PLAN FOR CABINET HANGER FIXED UNDER THE CABINET TOP

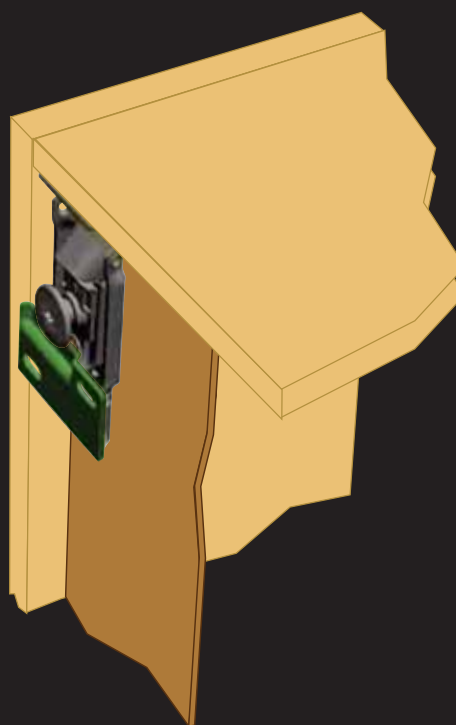


## OTHER APPLICATIONS FOR CABINET HANGER NOT FIXED TO THE TOP



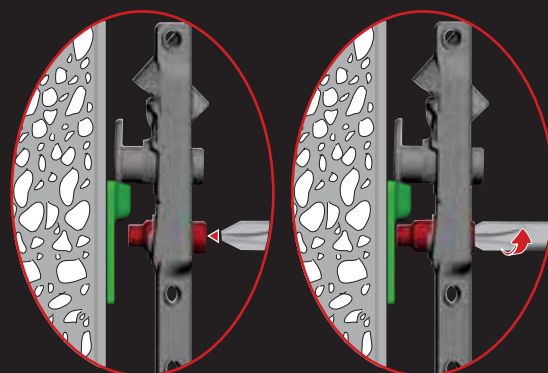
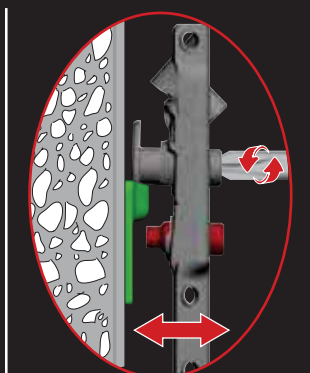
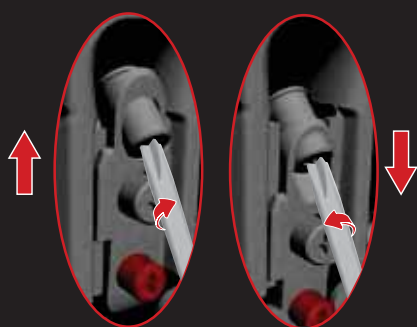


1  
VERTICAL ADJUSTMENT  
13 mm



2  
HORIZONTAL ADJUSTMENT  
12 mm

3  
ANTI TURNOVER LOCKING



# LIBRA H5

LIBRA is the innovative family of CABINET HANGERS and WALL PLATES especially conceived to satisfy all the customer's needs. The LIBRA hangers are to be installed behind the rear panel with the only small cover caps left visible inside the cabinet.

LIBRA is a very resistant and reliable solution as the zinc alloy body is sensibly thicker, and therefore stronger.

All the models within the LIBRA family feature an innovative ANTI-TURNOVER device which is covered by patent.

LIBRA H5 is the left/right cabinet hanger with 2 semi-circular pins  $\varnothing 16\text{mm}$  + pre-inserted screw for the top (if required).

Also featured in the LIBRA family are 5 types of wall plates and 1 types of wall bars made of very thick zinc-coated steel and hardened by punched impressions.

Wall bars and wall plates feature oval holes which facilitate the correct positioning and give the possibility to carry out the horizontal adjustment.

Placement of the holes for wall-fixation has been optimised to reduce the stress on the plates and on the plugs.

LIBRA cabinet hangers allow to adjust the cabinet vertically and horizontally. The 2 movements are 100% INDEPENDENT of each other and therefore make the adjustments much easier and more efficient.

The adjustment and the locking of the ANTI-TURNOVER bolt can be carried out from the inside of the cabinet by using a standard PZ2 screwdriver.

Capacity Loading 120 Kilos per piece in accordance with the regulation DIN 68840

Steel, Zinc alloy and Engineering plastic according to related version.

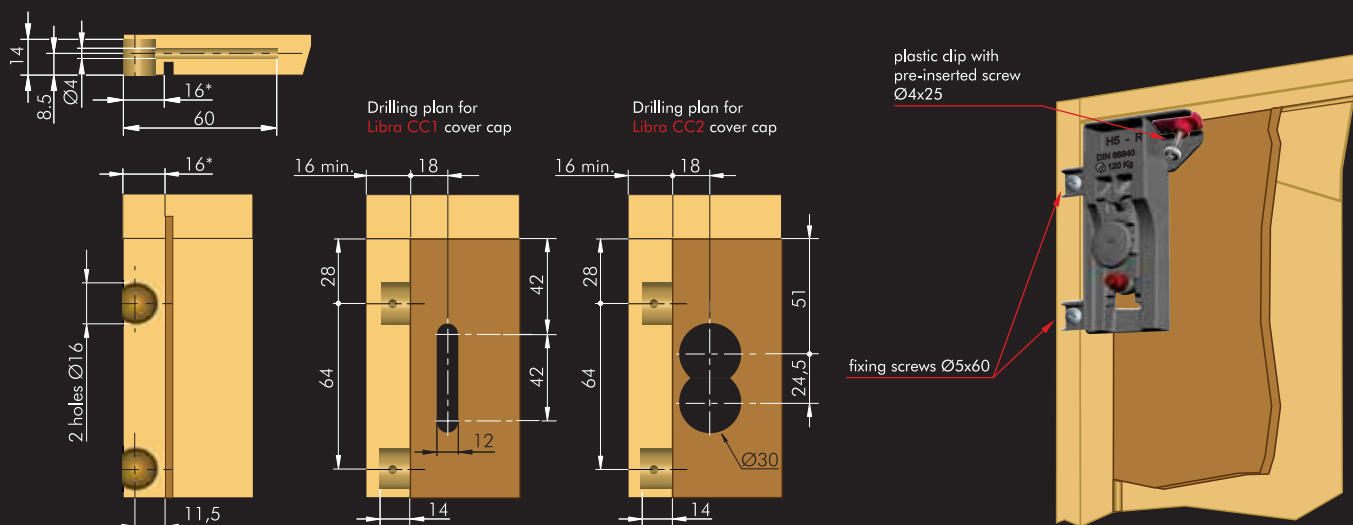
PAT. PENDING



Part. no	Description
63420300ZN	Cabinet hanger <b>Libra H5</b> with plastic clip and screw pre-inserted - right
63420310ZN	Cabinet hanger <b>Libra H5</b> with plastic clip and screw pre-inserted - left
63420340ZN	Cabinet hanger <b>Libra H5</b> - right
63420350ZN	Cabinet hanger <b>Libra H5</b> - left

For wall plates and cover caps please refer to the last pages of the leaflet.

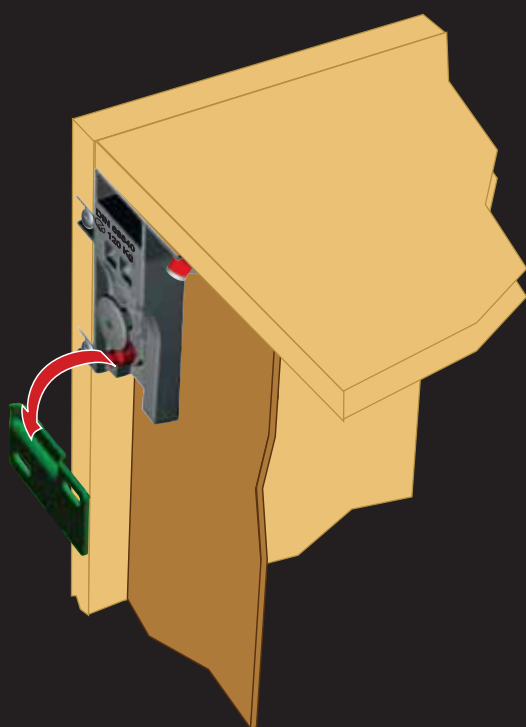
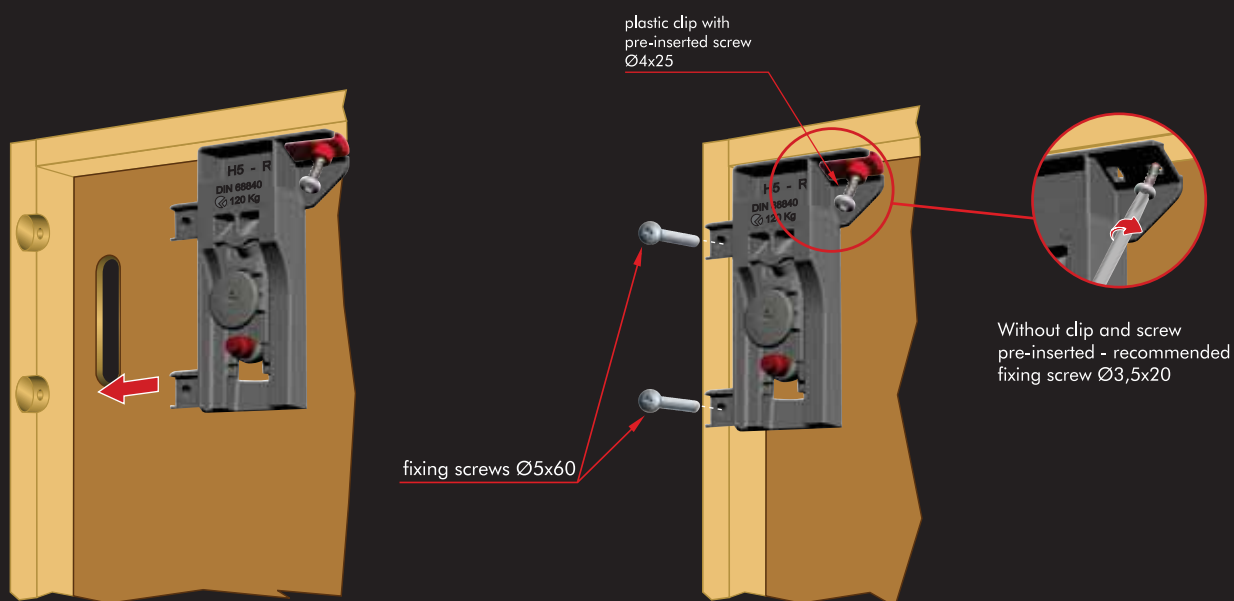
## DRILLING PLAN FOR CABINET HANGER FIXED UNDER THE CABINET TOP



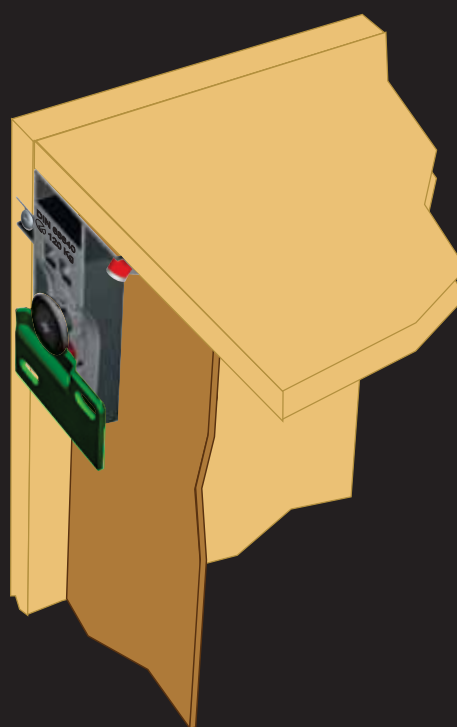
\* For different service gap options, please contact our offices.

## OTHER APPLICATIONS FOR CABINET HANGER NOT FIXED TO THE TOP



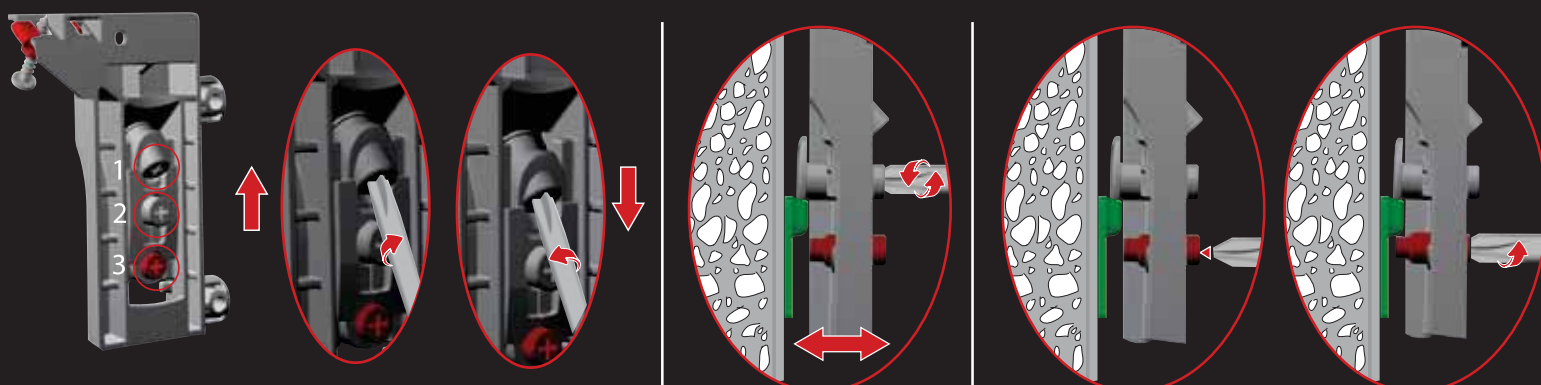


1  
VERTICAL ADJUSTMENT  
13 mm



2  
HORIZONTAL ADJUSTMENT  
12 mm

3  
ANTI TURNOVER LOCKING



# WALL PLATES

Also featured in the LIBRA family are 5 types of wall plates and 1 type of wall bar made of very thick zinc-coated steel and hardened by punched impressions. Wall bars and wall plates feature oval holes which facilitate the correct positioning and give the possibility to carry out the horizontal adjustment. Placement of the holes for wall-fixation has been optimised to reduce the stress on the plates and on the plugs. Bars and plates are available either with 1 or 2 hanger fixing positions (backwards and forwards), to be used according to the thickness of tiles or other elements attached to the wall which protrude under the fixed wall plate, in order to enhance the in-depth adjustment range without affecting the stability and resistance of the system.

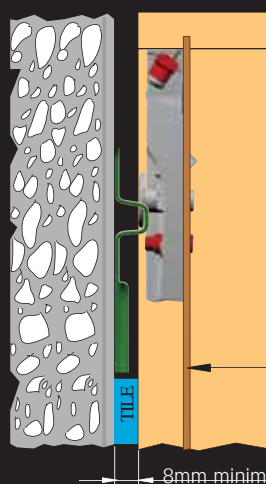
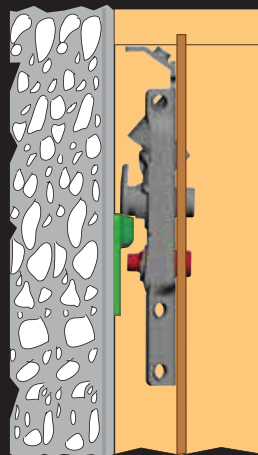
Plates are provided in pairs to be used for installing two cabinets next to each other, or to be split in two pieces for installing single cabinets.

Bars can be cut to measure in any position and are superficially marked to easily spot the required measurement. Bars will be completely enclosed within the side panels of the cabinets (for cabinets width 450-600-750-900-1200-1500-1800). Along the bars, particular modular flattenings have been created to allow the hanging of nearby cabinets, reducing to the minimum the distance between the wall and the cabinet.

Steel, Zinc alloy

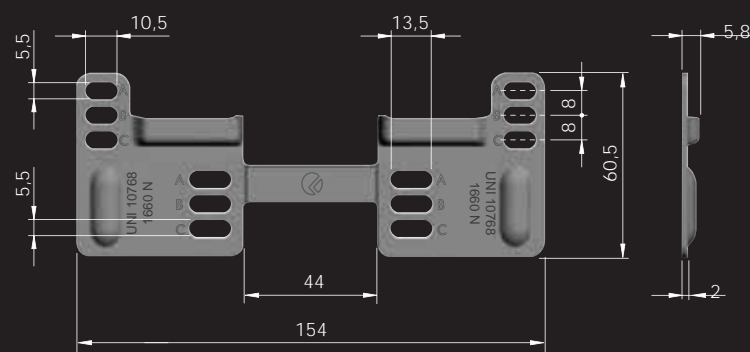
LIBRA WALL PLATES are tested in accordance with the UNI10768 norm and certified by CATAS.

PAT. PENDING



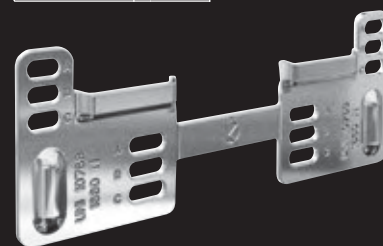
Specific application for tiles thicker than 8mm

## LIBRA WP2



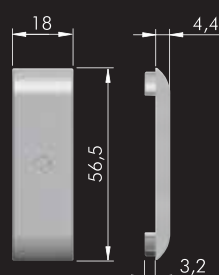
Capacity Loading 1660 N  
Suitable for Libra H1, H2, H3, H5

Part. no	Finish
63450020ZN	Zinc



## COVER CAPS

### LIBRA CC1

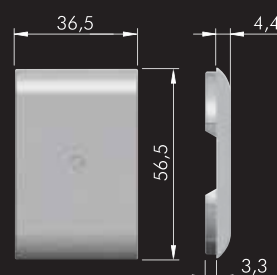


Cover cap Ø12  
Engineering plastic

Part. no	Finish
63461010AB	White



### LIBRA CC2



Cover cap Ø30  
Engineering plastic

Part. no	Finish
63463010AB	White

