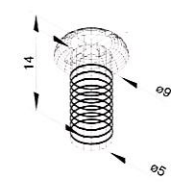
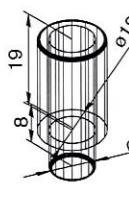
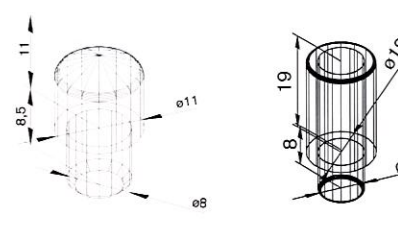
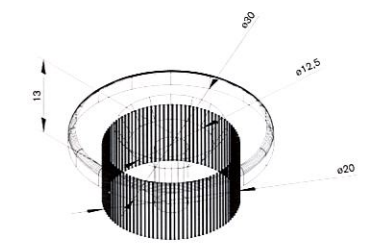
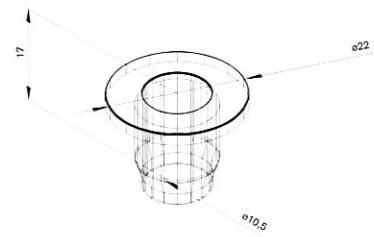
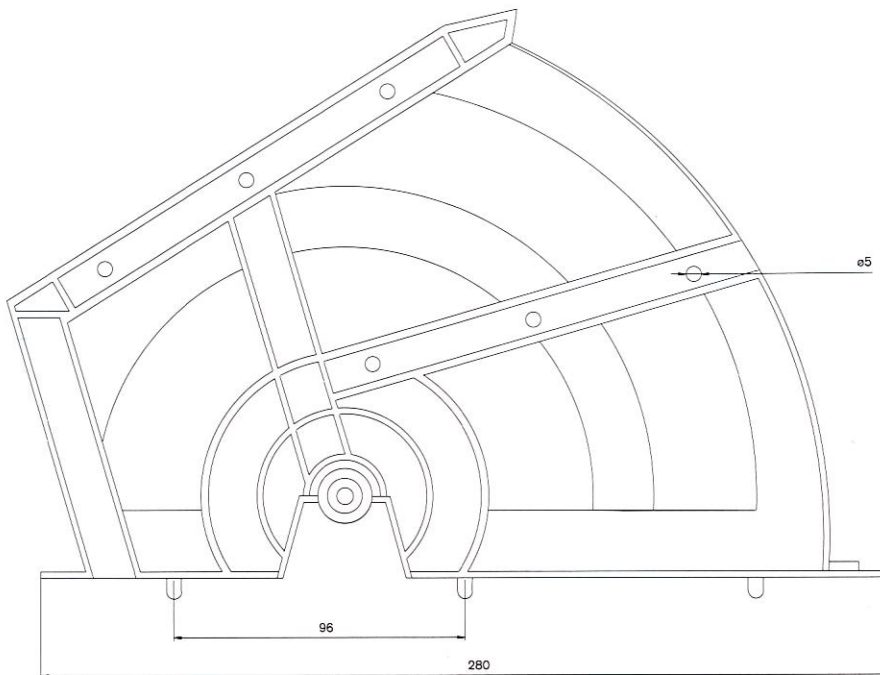
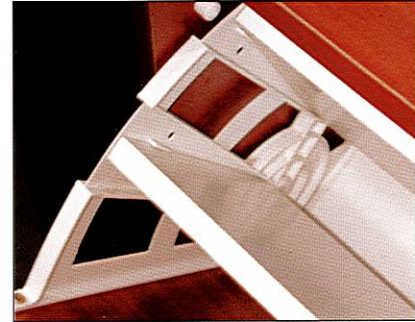
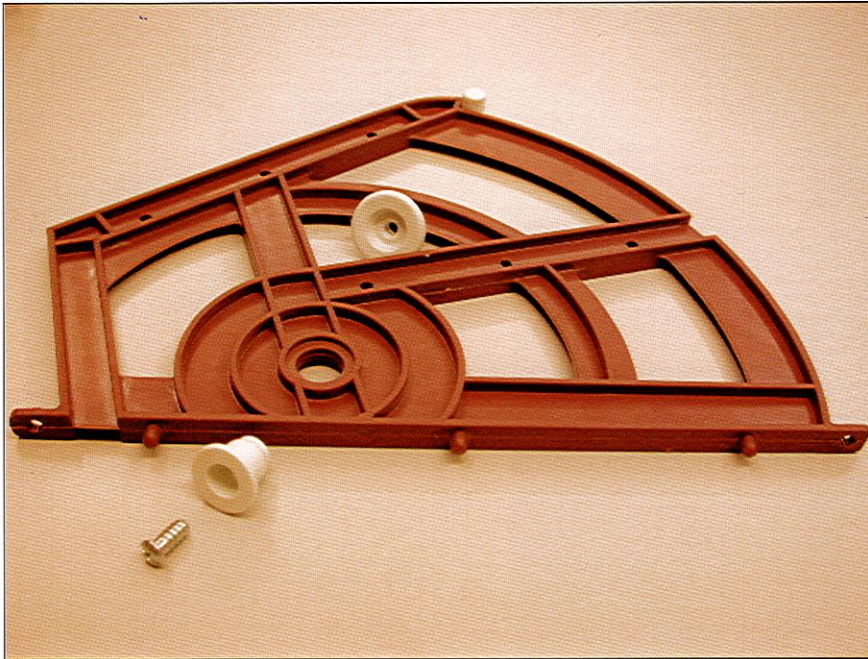


ZAPATERO DE 2 BALDAS MOD. CASQUILLOS**FERRAGENS E COMPONENTES PARA A
INDÚSTRIAS DE MÓVEIS E CONST. CIVIL**

Telef.: +351 218 142 142 (10 Linhas) - Fax's: +351 218 124 053 / +351 218 150

<http://www.interfer.pt> * E-mail: geral@interfer.pt

SEDE (HEAD OFFICE): Rua Morais Soares, 21 - C - 1900 - 339 LISBOA - PORTUGAL



REF.	DESCRIPCIÓN												
0072A	COMPÁS ZAPATERO 2 BALDAS	100	PS	BL-MA	10	-	X	-	-	-	11	-	28
0187A	CASQUILLO LISO	3.000	PS	BL-MA	10	-	-	X	-	X	30	13	-
0187B	CASQUILLO ESTRIADO	3.000	PS	BL-MA	10	-	-	X	-	X	22	17	-
0050	TOPE CILÍNDRICO	3.000	PS	BL-MA	10	X	-	-	-	X	11	19,5	-
0186	TORNILLO EURO 14/13	3.000	UNI	NO COL.	10	-	X	-	-	-	9	14	-
0148	TOPE ZAPATERO C/PITÓN	2.000	PS	BL-MA	10	X	-	X	-	X	8	27	-