



INTERFER

Kintai

SHELF SUPPORT

Kintai

KINTAI is the new shelf support developed by Italiana Ferramenta with minimal and elegant design, available in four colours to satisfy any matching needs according to the finish of the shelf.

Suitable for shelves with minimum 16mm thickness, KINTAI grants a loading capacity of 70 Kg per shelf (internal test according to norm UNI 16337:2013).

The 5mm pin with spring system allows an easy and fast positioning of the inner shelves and the delivery of the cabinet with all shelves already assembled.

The shelves can be repositioned with few manual operations, simply by moving the plastic cover and clicking in and out the pin of KINTAI.

The installation requires an easy edge boring of the panel with a dedicated drill bit. KINTAI is also conceived for automatic assembly.

FEATURES AND BENEFITS



MINIMAL AND ELEGANT DESIGN

available in four colours,
minimum shelf thickness:
16mm



LOADING CAPACITY: 70KG
PER SHELF
according to norm UNI
16337:2013



EASY AND FAST POSITIONING
OF THE SHELF
thanks to the 5mm pin with
spring



SHELF FASTENING
possibility to deliver the
cabinet with shelves already
assembled



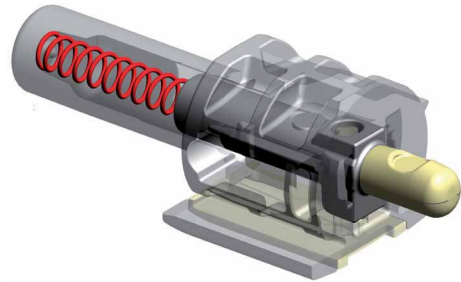
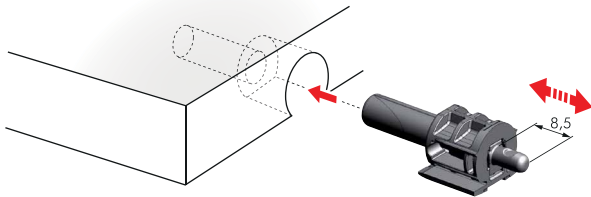
EASY REPOSITIONING OF
THE SHELF
with few manual operations



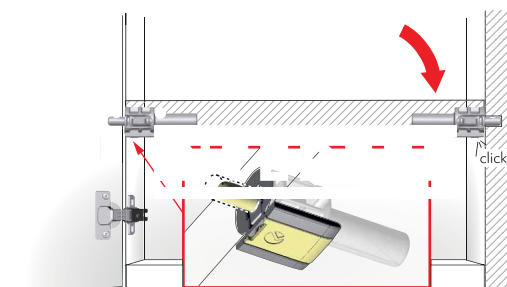
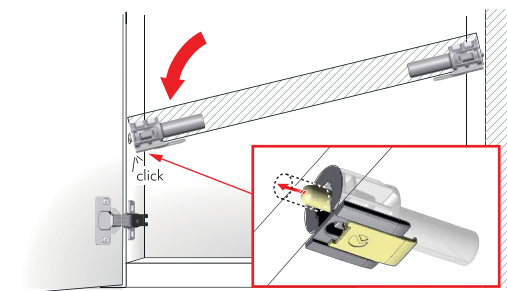
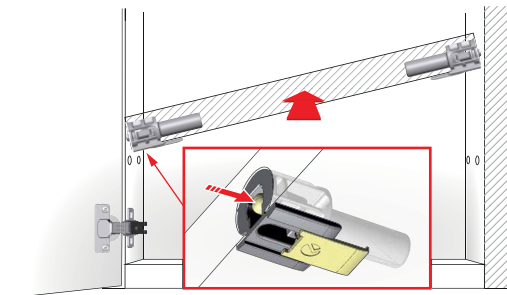
EASY INSTALLATION
edge boring of the panel with
dedicated drill bit,
conceived for automatic
assembly

Be safe, be smart.

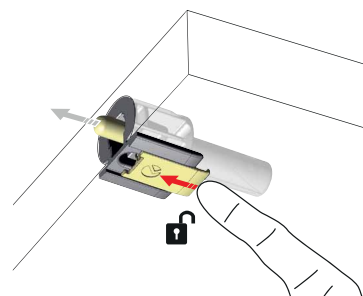
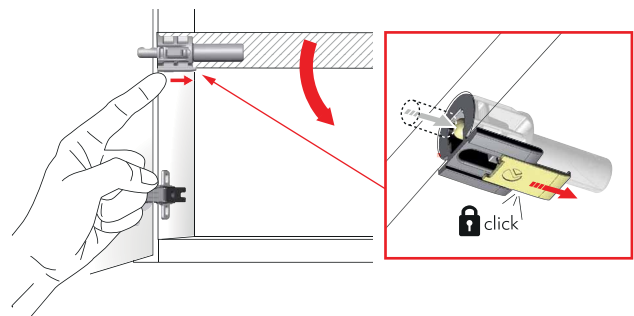
INSTALLATION



SHELF INSTALLATION



SHELF REMOVAL FOR NEW REPOSITIONING



Manually unlock the KINTAI
before shelf repositioning.

DESIGN FINISHES



white



grey 19

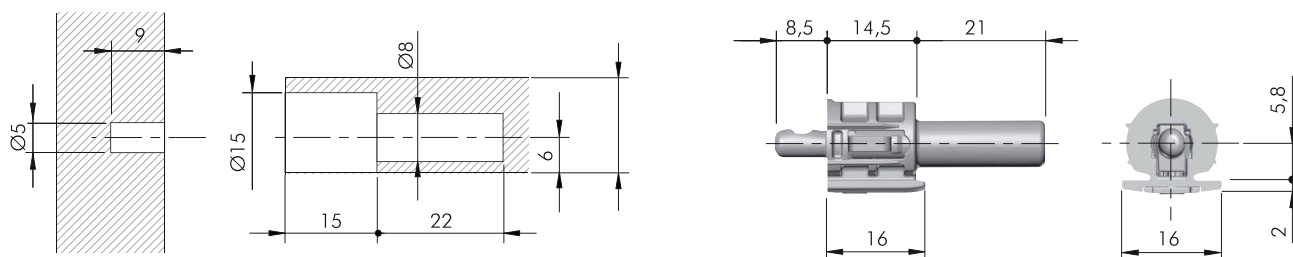


grey 20



anthracite

DRILLING PLAN







•
INTERFER



www.italianaferramenta.com

Italiana Ferramenta s.r.l.

Viale Europa 17 - 33070 Brugnera (PN) Italy
hone +39 0434 428211 - Fax +39 0434 428242
E-mail: info@italianaferramenta.it